



ORKA HR



ORKA HR D150

Whole house heat recovery unit for single dwelling houses, with crossflow heat exchanger. It guarantees continuous air replacement in single dwelling houses up to 90% of efficiency. Equipped with 2 centrifugal fans (a supply and an extract fan), each with a 230V-50Hz motor, Class B, 3-speed, designed for continuous operation, and terminal housing to connect the power supply cable. 100% manual bypass. Equipped with filter change alarm. Multi-position system. It can be mounted on the floor and into the false ceiling. To ensure good air quality, is equipped with a M5 filters: (ISO ePM10 50%, a 210 m³/h) on the inlet side and a G4 (ISO coarse 65%, a 210 m³/h) on the extraction side. In case of low outside temperatures it is necessary to install a pre-heating coil.



Specific applications



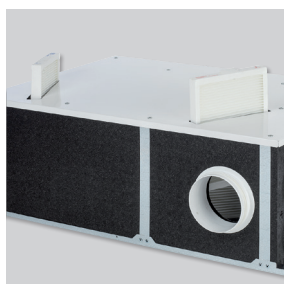
Single dwellings



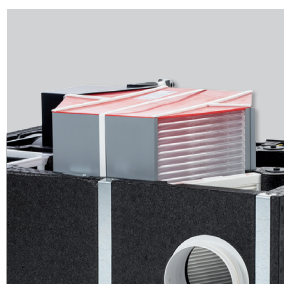
Multi dwelling blocks



Heat recovery unit



Easy maintenance
 PPE body that provides thermal insulation and lightness.



High efficient counter flow heat exchanger
 Manufactures from polypropylene plates.



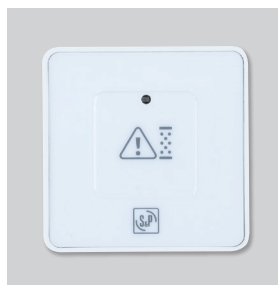
Double drain for floor or false ceiling installation.



Integrated rubber seals
 Circular connection flange with integrated rubber seals.



Incorporated remote control with double-switch:
 - by-pass activation
 - speed change



Timer
 Dirty filter alarm, by electronic removable time-switch.



ORKA ST



ORKA ST D150

Double airflow VMC system for single dwelling houses, with crossflow heat exchanger. It guarantees continuous air replacement in single dwelling houses up to 70% of efficiency.

Equipped with 2 centrifugal fans (a supply and an extract fan), each with a 230V-50Hz motor, Class B, 3-speed, designed for continuous operation, and terminal housing to connect the power supply cable.

100% manual bypass.

Equipped with filter change alarm.

Multi-position system. It can be mounted on the floor and into the false ceiling.

To ensure good air quality, is equipped with a M5 filters: (ISO ePM10 50%, a 210 m³/h) on the inlet side and a G4 (ISO coarse 65%, a 210 m³/h) on the extraction side.

In case of low outside temperatures it is necessary to install a pre-heating coil.



Specific applications



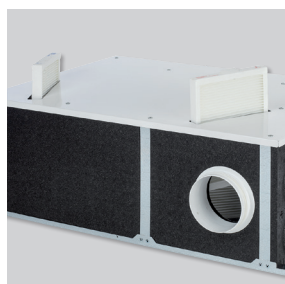
Single dwellings



Multi dwelling blocks



Heat recovery unit



Easy maintenance
 PPE body that provides thermal insulation and lightness.



High efficient counter flow heat exchanger
 Manufactures from polypropylene plates.



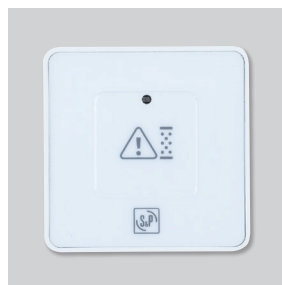
Double drain for floor or false ceiling installation.



Integrated rubber seals
 Circular connection flange with integrated rubber seals.



Incorporated remote control with double-switch:
 - by-pass activation
 - speed change



Timer
 Dirty filter alarm, by electronic removable time-switch.

REFERENCE

| | | |
|----------------|------------|----------------|
| O R K A | S T | D 1 5 0 |
| 1 | 2 | 3 |

- 1 - **ORKA:** Serie.
- 2 - **ST:** Cross flow heat exchanger.
HR: Counter flow heat exchanger.
- 3 - **D150:** 150 mm connection diameter.

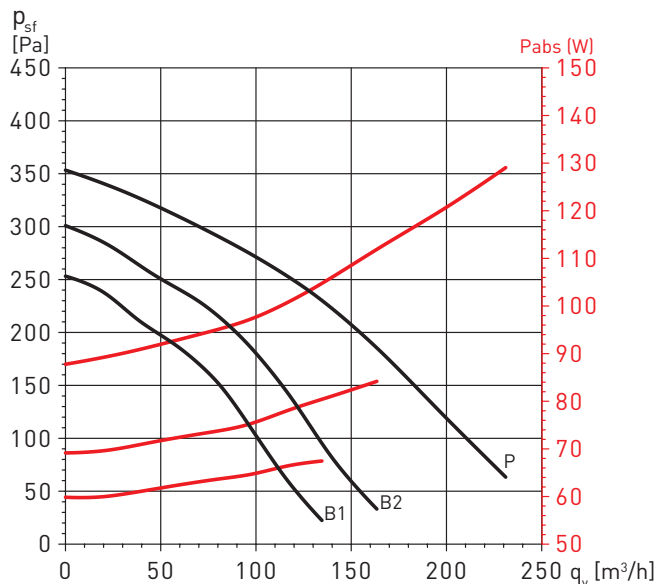
TECHNICAL CHARACTERISTICS

Before installation check that the product electrical characteristics listed on the data plate label (voltage, power, frequency, etc.) match those of the intended electrical supply.

| Model | Voltage (V) | Power absorbed at free discharge (Maximum) (W) | Flow reference performance* | Sound pressure level (dB(A)) | Configuration | Weight (kg) |
|--------------|-------------|--|-----------------------------|------------------------------|--|-------------|
| ORKA HR | 230 | 145 | 85 | 52 | 4 inlet spigots 80 mm 1 inlet spigots 125 mm | 20 |
| ORKA HR D150 | 230 | 145 | 85 | 52 | 1 inlet spigots 150 mm 1 inlet spigots 125 mm | 20 |
| ORKA ST | 230 | 145 | 66 | 52 | 4 inlet spigots 80 mm 1 inlet spigots 125 mm | 20 |
| ORKA ST D150 | 230 | 145 | 66 | 52 | 1 inlet spigots 150 mm 1 inlet spigots 125 mm | 20 |

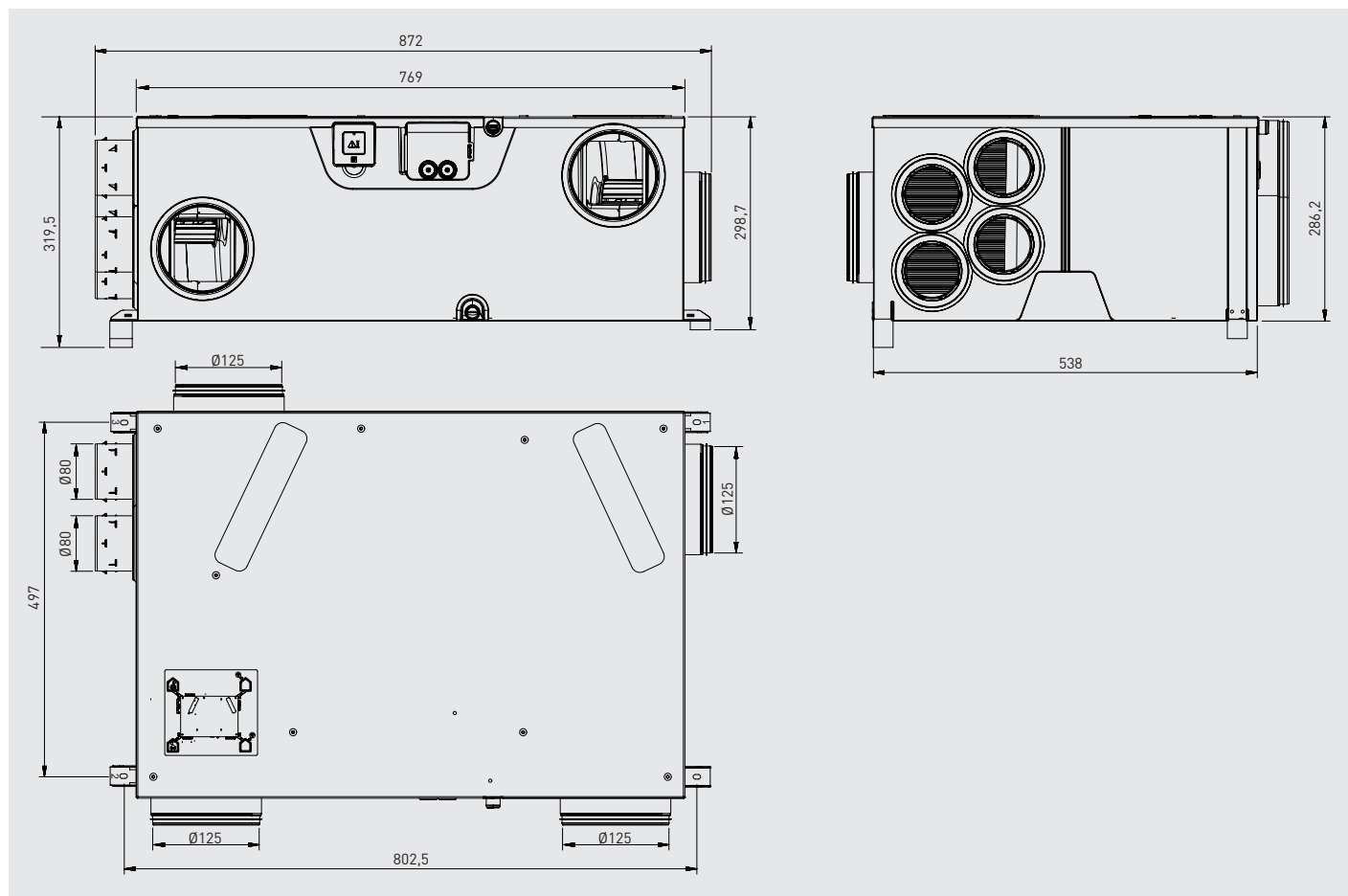
* Outdoor temperature: 5°C. Outdoor relative humidity: no significant . Indoor temperature: 25°C. Indoor relative humidity: 30%.

PERFORMANCE CURVES

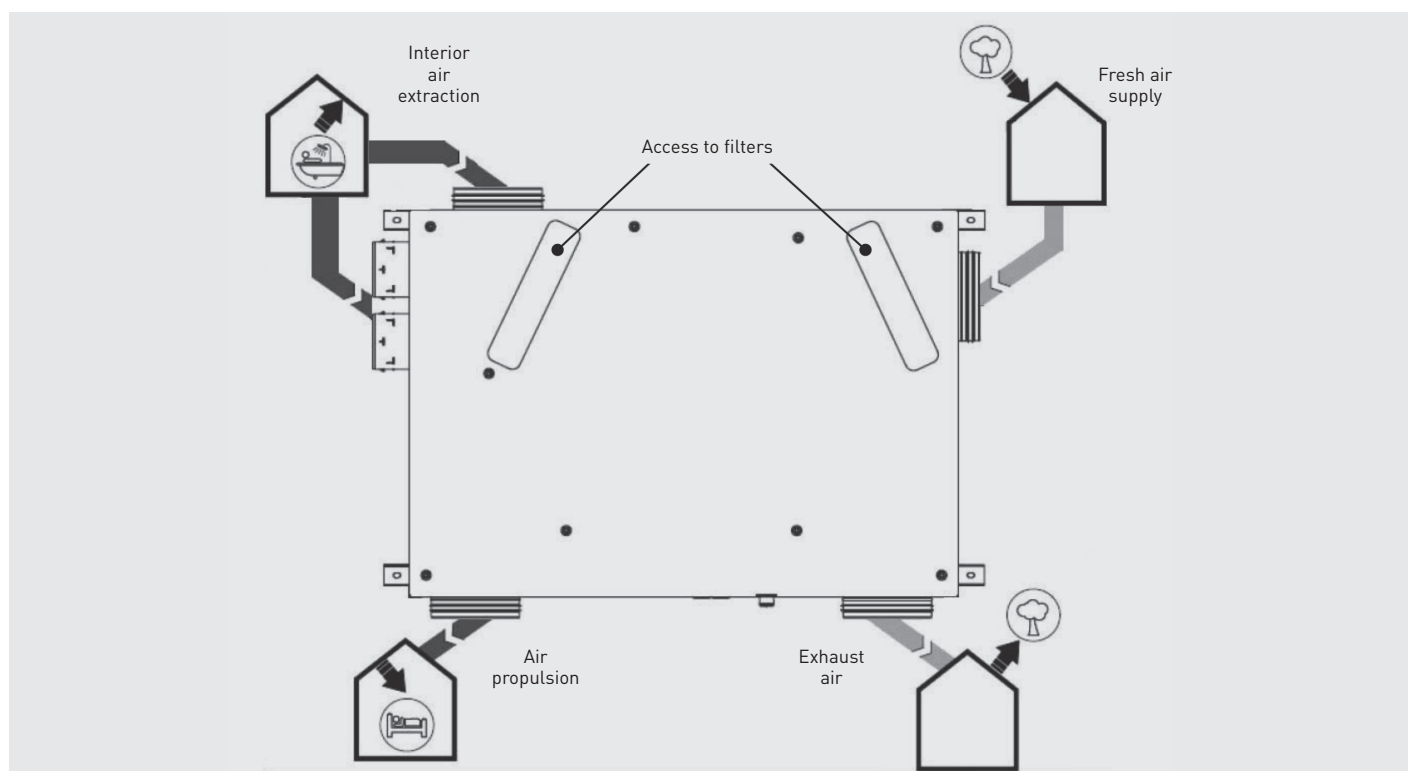


B1 and B2 Curves: Base speed, configurable.
 P Curve: Top speed.

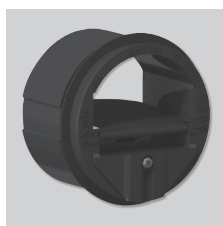
DIMENSIONS (mm)



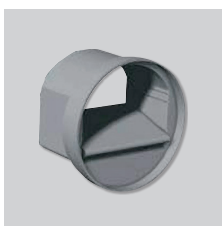
OPERATING DIAGRAM



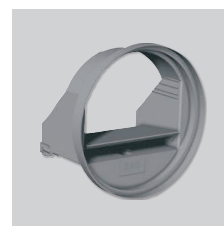
ACCESSORIES



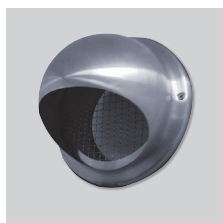
RDR
 Self-adjusting damper (50-250 Pa) that, fitted inside the duct, maintains constant airflow.



RD BP
 Air volume regulators. Maintain constant air volume within a pressure range from 20 to 200 PA. Fitted inside a duct. Diameter: 80mm. Air volume: 15 or 30 m³/h.



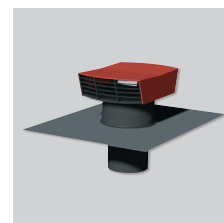
RD BP SM
 Specific low-pressure (20-100 Pa) and self-adjusting damper without sleeve to fit directly into the sleeve of the BDOP. 80 mm diameter. Airflow: 15 or 30 m³/h.



PAQS
 External wall air discharge that includes an anti insect grill.



BOA/BOAC Inlet valves
 BOA 80/125.
 BOAC 80/125.



CT
 Roof cowl.



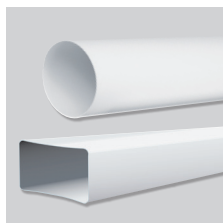
FLEXIREC
 Oblong semi-flexible duct.



FLEXICIR
 Circular semi-flexible ducts.



BDOP
 Supply and extraction valve.



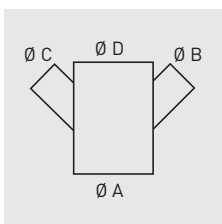
TUBPLA
 Rectangular and circular ducts.



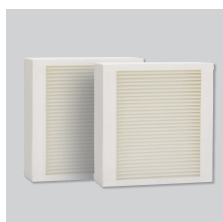
TUBPLA ESTANCO - V SERIES
 Rectangular and circular duct range. Equipped with a EPDM joint that gives an excellent tightness to the set.



DERIV
 Plastic sections for the connection/adaptation of different duct diameters.



| Model | Ø A (mm) | Ø B (mm) | Ø C (mm) | Ø D (mm) |
|-----------------------|----------|----------|----------|----------|
| DERIV 80-80 P | 80 | 80 | 80 | |
| DERIV 125-60-60-125 P | 125 | 60 | 60 | 125 |
| DERIV 125-60-60-125 P | 125 | 60 | 60 | 60 |
| DERIV 150-125-125 P | 150 | 125 | 125 | |
| DERIV 150-60-60-125 P | 150 | 60 | 60 | 125 |



KIT G4/G4 ORKA
KIT M5/G4 ORKA
 Replacement filter set G4/G4 and M5/G4.